

## OFFICE SPACE FOR LEASE

# 200 PARKWAY DRIVE SOUTH HAUPPAUGE, NY



### SPECIFICATIONS:

<b>Building Size:</b>	<b>+/- 28,000 SF</b>
<b>Available Space</b>	<b>+/- 3,311 RSF (Suite 100 - 1st Floor)</b>
	<b>+/- 1,625 RSF (Suite 301 - 3rd Floor)</b>
	<b>+/- 4,252 RSF (Suite 300 - 3rd Floor)</b>
<b>Parking:</b>	<b>Ample</b>
<b>Asking Lease Price:</b>	<b>\$19.00 PSF + \$3.00 Electric</b> <b>(CAM &amp; Base Year RE Taxes Included)</b>

### COMMENTS:

- Large window ratio
- Beautiful, park-like setting
- Convenient access to parkways
- Immediate occupancy

### EXCLUSIVE AGENT:

**DANIELLE SQUILLANTE** | Associate  
516.328.6500 x 555  
dsquillante@suttonandedwards.com

**STEVE D'ORAZIO** | Associate  
631.389.2900 x 232  
sdorazio@suttonandedwards.com

1981 MARCUS AVENUE  
LAKE SUCCESS, NY 11042  
T. 516.328.6500  
F. 516.328.6749

200 THIRTEENTH AVENUE  
RONKONKOMA, NY 11779  
T. 631.389.2900  
F. 631.389.2920

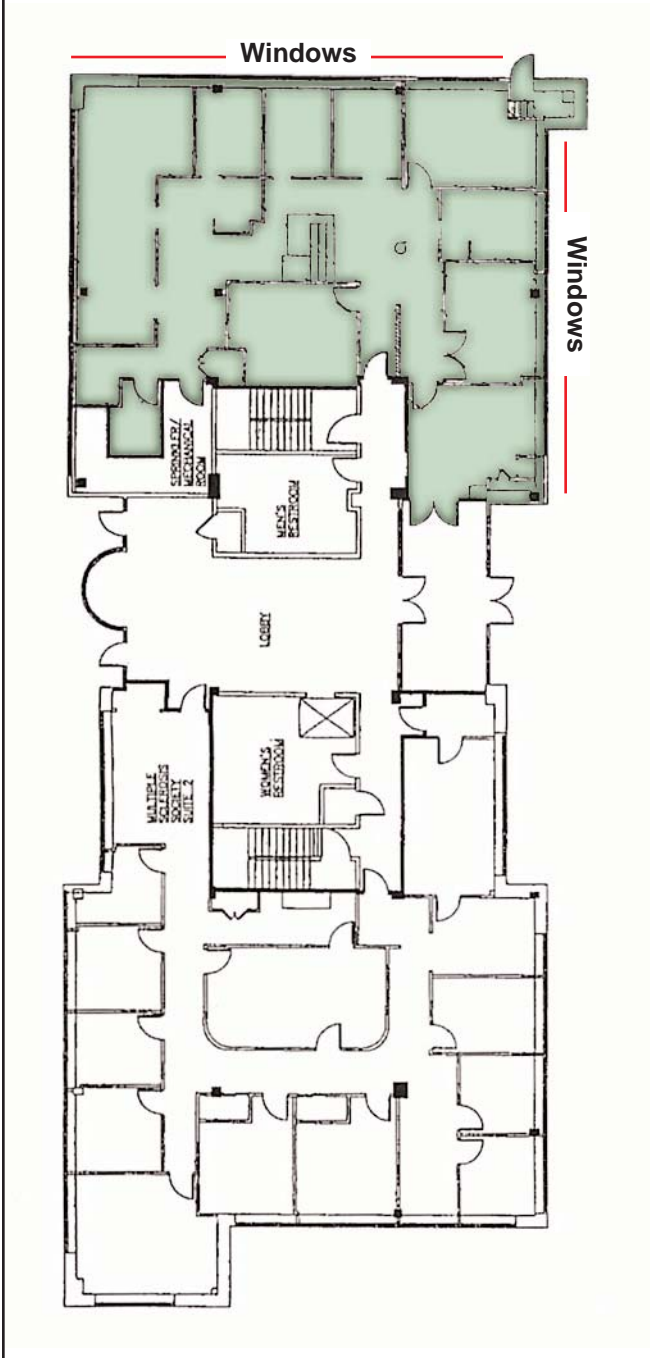
[www.suttonandedwards.com](http://www.suttonandedwards.com)

Although the information furnished regarding property for sale, rental or financing is from sources deemed reliable such information has not been verified and no express representation is made nor is any to be implied as to the accuracy thereof and it is submitted subject to errors, omissions, change of price, rental or other conditions prior to sale, lease or financing or withdrawal without notice.

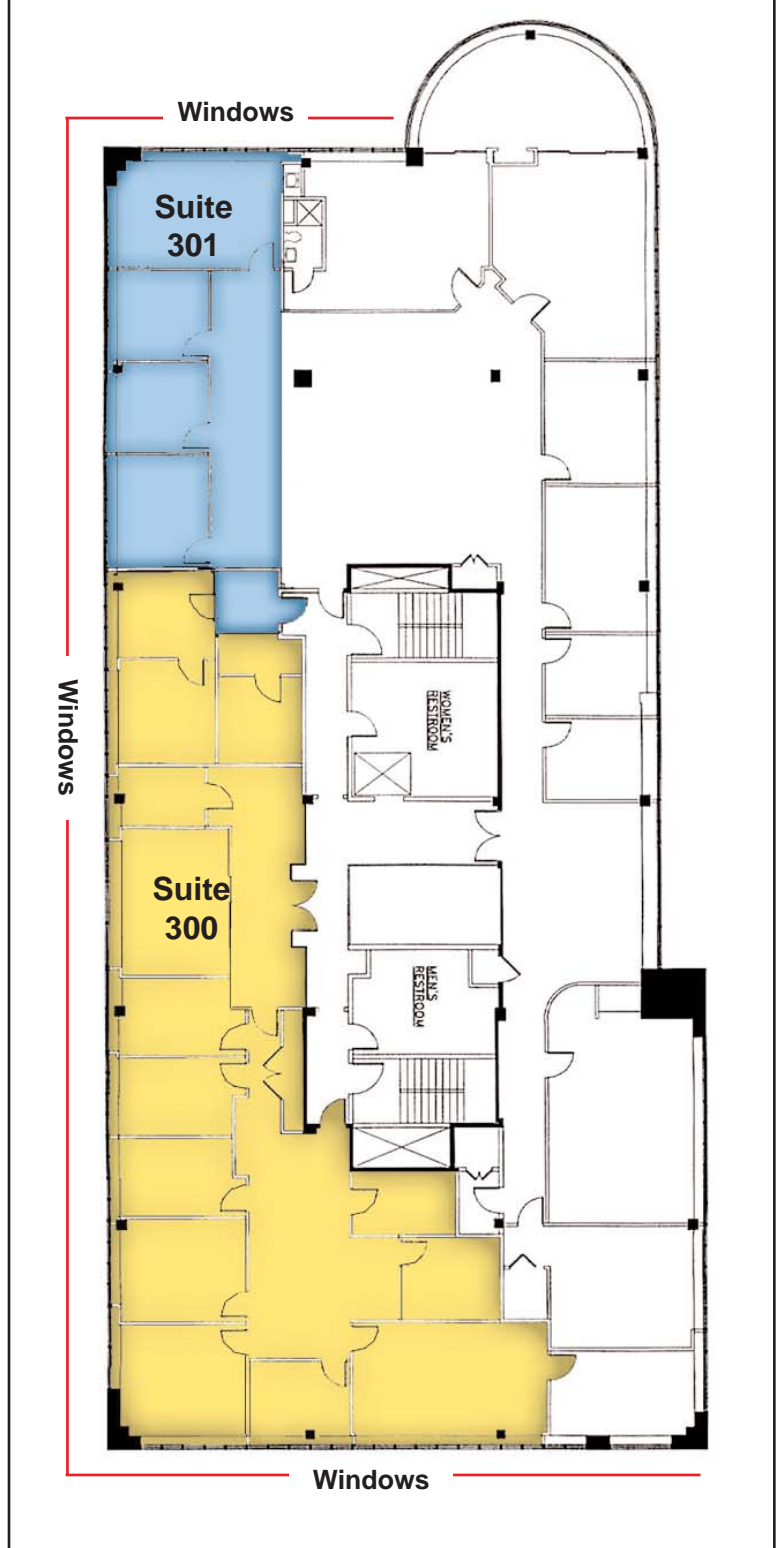
**SUTTON &  
EDWARDS**  
COMMERCIAL REAL ESTATE

**FLOOR PLANS:**

**First Floor (Suite 100)**



**Third Floor**



**Not to Scale**  
**For Location Purposes Only**

Although the information furnished regarding property for sale, rental or financing is from sources deemed reliable such information has not been verified and no express representation is made nor is any to be implied as to the accuracy thereof and it is submitted subject to errors, omissions, change of price, rental or other conditions prior to sale, lease or financing or withdrawal without notice.